

The Danish Cancer Society
Funding & Follow-up

Strandboulevarden 49
2100 København Ø

Tel. +45 35 25 75 00

forskningsbevilling@cancer.dk

www.cancer.dk

UNDER THE PATRONAGE OF
HER MAJESTY THE QUEEN OF DENMARK

Funding possibilities and application guidelines 2026

The Danish Cancer Society's Scientific Committee – Biology & Clinic (KBVU-BK)
The Danish Cancer Society's Scientific Committee – People & Society (KBVU-MS)
Knæk Cancer Committees (KC) and ad hoc committees



TABLE OF CONTENTS

1. THE SCIENTIFIC COMMITTEES.....	3
2. ALLOCATIONS AND DEADLINES	4
3. APPLICABLE RULES FOR ALL APPLICANTS	5
4. PROJECT SUPPORT	8
5. YOUNG TALENTED CANCER RESEARCHERS – RESEARCH CAREERS AND POSTDOCTORAL FELLOWSHIPS	10
6. KNÆK CANCER (KC) – PROJECT SUPPORT FOR STRATEGIC FOCUS AREAS.....	16
7. KNÆK CANCER (KC) – PROFESSORSHIP	20
8. STAY ABROAD EXCEEDING 1 MONTH - WITHOUT SALARY.....	22
9. STAY ABROAD FOR LESS THAN 1 MONTH - WITHOUT SALARY.....	25
10. SCHOLARSHIP.....	28
11. THE DANISH CANCER SOCIETY'S RESEARCH TALENT AWARDS	30
12. THE APPLICATION SYSTEM AND FORMS.....	32
13. THE COMMITTEES' ADDRESS AND SECRETARIAT	41



1. The Scientific Committees

1.1 The Danish Cancer Society's Scientific Committee - Biology & Clinic (KBVU-BK)

The committee supports biological, translational, and clinical cancer research within medical and natural sciences.

The focus of KBVU-BK is to support scientific projects in biological cancer research that improve our knowledge, e.g., of the early stages of cancer, and identify mechanisms and reasons for cancer to occur, grow, and spread, as well as the late complications that often follow a cancer course. The committee welcomes applications for translational studies and clinical research that bridge scientific breakthroughs to clinical practice and that develop and improve cancer treatment.

1.2 The Danish Cancer Society's Scientific Committee – People & Society (KBVU-MS)

The committee supports humanistic, social, and public health sciences and epidemiological cancer research.

The focus of KBVU-MS is to support scientific and preferably inter-disciplinary projects, engaging in psychological, cultural, social, and socio-economic aspects of cancer, including, for example, patient perspective, behavioural research, rehabilitation, palliative care, ethics, as well as research related to the structure of the healthcare system and function with relevance to cancer. Furthermore, the committee will support cancer research projects in social medicine and epidemiology. Both quantitative and qualitative methods can be used.

1.3 Knæk Cancer committees and other ad hoc committees assessing thematic pools

Each year, the Central Board decides on a pool for strategic thematic efforts. The assessment of applications for thematic efforts, including the Knæk Cancer focus areas, will, wherever possible, involve all or some members of the scientific committees KBVU-BK and KBVU-MS. The committees may also be supplemented by, or consist solely of, external experts in the concerned field.



2. Allocations and deadlines

All applications must be submitted digitally in our application system by 15:00 on the application deadline. Read more in section [12.5. Submit](#).



22 January

- Main Allocation KBVU-BK - [Project support within the committee's funding areas](#)
- Main Allocation KBVU-MS – [Project support within the committee's funding areas](#)
- Knæk Cancer (KC) – [Project support for strategic focus areas](#)

2 March

- [Research Talent Awards](#) (nominations)

20 May

- [Young Talented Cancer Researchers](#) – project funding for the establishment of Research Careers for young cancer researchers
- [Young Talented Cancer Researchers](#) - Postdoctoral Fellowships in DK and abroad
- [Scholarship](#)
- [Stay abroad exceeding 1 month's duration without salary](#)
- [Stay abroad for less than 1 month's duration without salary](#)
- [Professorship in late effects of cancer and its treatment](#)

8 October

- [Scholarship](#)
- [Stay abroad exceeding 1 month's duration without salary](#)
- [Stay abroad for less than 1 month's duration without salary](#)

The deadlines are indicative and may change. Always check dates and other themes regularly posted on our website, www.cancer.dk/opslag.



3. Applicable rules for all applicants



- The application must be received digitally before the stated deadline
- Grants will not be allocated retrospectively
- You are only allowed to submit one application in each application round
- You can normally only have one active project grant at a time from each committee (KBVU-BK, KBVU-MS and KC) – that means if you already have a grant, you may only apply again to the same committee in your final year of funding
- Funds cannot be re-applied for the same project or fellowship within the same year, regardless of the pool and applicant
- Re-application of a project or fellowship the following year cannot be sent without significant relevant changes
- The application form and all attachments must be completed in English, except when it is explicitly stated that it must be in Danish
- It is a precondition that
 - The research is cancer-relevant
 - You, as the applicant, comply with the Danish Code of Conduct for Research Integrity www.cancer.dk/thedanishcodeofconduct
 - Necessary permissions and approvals are obtained before the project is started. It is the grant holder's responsibility to obtain permissions and approvals from, e.g., the Data Protection Agency, Ethics Committee and Animal Research Authority before the start-up of the project
 - [3R-principles](#) are followed in projects involving animals, as the Danish Cancer Society complies with [Joint European funding principles for research involving animals](#) (opens in PDF)
- Applicants who, within the last 10 years, have received, receive, or expect to receive funding from companies/corporations/foundations which, to a large extent, depend on income from the production and sale of obvious cancer carcinogenic substances, particularly tobacco, cannot obtain funding from the Danish Cancer Society. See the [Danish Cancer Society's ethical guidelines](#).
- Efforts must be made to involve cancer patients, relatives, or other relevant players actively in the creation and design of the project – read more in section [3.3](#)
- The applicant should strive for the project to involve collaboration across relevant geographical areas and disciplines
- The assessment committees look favourably on projects that bring knowledge from basic research into clinical practice
- Relationships between the applicants and private or own companies do not prevent the applicants from receiving funding – but these must be accounted for in the Project Information
- Applications can be made for specific expenses directly linked to the individual research project – see section [3.1](#)
- If support is received for the same purpose from other sources, the Danish Cancer Society reserves the right to make deductions from a potential grant. The applicant is obliged to inform the Danish Cancer Society if they receive support from other sources
- Calls are open for applicants who, in the planned project period, are employed at a Danish research institution of the Unity of the Realm (Rigsfællesskabet - Denmark,



Greenland, and the Faroe Islands), and wish to conduct a cancer research project at the same or a foreign research institution

3.1 You can, in general, not apply for support for

- Overhead (rent, telephone, lighting, water, office supplies, bench fee, etc.), administration fees and similar expenses, as well as percentage-wise fixed expenses
- Tuition fee, supervision, course expenses, as well as overhead in connection with PhD studies
- Costs related to gold [Open Access](#)
- Computers and computer equipment, unless it is related to specialised hardware/software (must be substantiated under Detailed budget information)
- Expenses defrayed before the date of application
- Establishment or operation of biobanks
- More than 3 years' salary for a PhD student (can only be applied for by the supervisor or the head of the institute)
- Running costs in relation to long-term stays abroad
- Salary for scholars (research year students) – must be applied for as a scholarship by the student instead
- Workshops and general catering for meetings
- Remuneration and gifts to project participants

3.2 Review of the application

The committee's prioritisation of a project application is based on

- Cancer relevance
- Quality
- Feasibility
- Novelty value
- Qualifications of the applicant
- The research environment of the applicant, including relevant collaborators
- The application budget
- Patient involvement (in projects where it is estimated to be relevant – read more in section [3.3](#))

The entire committee makes the decision.

External assessment

Project applications submitted by committee members are always sent for external assessment abroad, preferably. Opinions of external assessors will be included in the application's overall assessment and sent to the applicant anonymously.



3.3 Patient involvement

Efforts must be made to actively involve cancer patients, relatives, and other relevant stakeholders in the creation and design of the project. Also, the patient perspective should be emphasised if deemed relevant.

The type and the extent of the user involvement must be clearly stated in the research plan. If the applicant assesses that user involvement is not possible or expedient, this must be substantiated explicitly in the research plan.

Read more and find good advice on patient involvement on our website [here](#).

Please be aware that if the committee considers patient or user involvement relevant to the project, it may negatively impact the overall assessment if no patient or user involvement is planned.



4. Project support

Application deadline	22 January 2026 at 15:00
Funding area/form	KBVU-BK project KBVU-MS project
Pool	KBVU-BK: Up to DKK 85m, of which DKK 5m are expected from the Knæk Cancer collection KBVU-MS: Up to DKK 22m, of which DKK 10m are expected from the Knæk Cancer collection
Requirement	Grantees who have received Knæk Cancer funds are requested to contribute to the communication about the granted project
Assessment committees	KBVU-BK and KBVU-MS, respectively
Notification	KBVU-BK: Ultimo May KBVU-MS: Ultimo April
Funding start date	A grant can be used from 1 January the following year



4.1 Purpose

The Danish Cancer Society wants to support scientific cancer research projects of high quality to support our goal of fewer people getting cancer, more people surviving cancer, and a better life after cancer.

4.2 You can apply for

- Scientific and non-scientific assistance (e.g., salary for PhD students, postdoctoral fellows, laboratory technicians, statisticians, etc.)
- Up to 20% of your salary as a buyout; however, up to 50% buyout for clinical work
- Salary for a highly qualified guest researcher for a period of up to a maximum of 2 years
- Specific running costs, etc., directly linked to the individual research project
- Equipment up to a total of DKK 100,000
- Travel costs for a researcher staying abroad paid by the project – please follow the guidelines for stay abroad for less or more than one month's duration

4.3 You cannot apply for

- Your PhD salary or project funds at all, as PhD students cannot apply for funding on their own – PhD salary can be applied for by the supervisor or another experienced researcher



- Your postdoctoral salary – as a postdoctoral fellow, you must apply for the Young Talented Cancer Researchers pool to cover your salary
- Scholarship salary (research year students) – as a pre-graduate, you must instead apply for the pool Scholarship
- Please read section [3.1](#) You can, in general, not apply for support for

4.4 Please note

- The applied amount must be a minimum of DKK 300,000 in total and a maximum of DKK 2m per year (DKK 6m in total)
- Applications which do not include project funding for the coming calendar year, but only the following, will be rejected
- Funds cannot be re-applied for the same project or fellowship within the same year, regardless of the pool and applicant
- Re-application of a project or fellowship the following year cannot be sent without significant relevant changes
- Funding for long-term projects can usually be applied for up to 3 years
- The applicant must have documented relevant research experience and must, as a minimum, be a first author of one article (preferably more) in an international journal with peer review or similar
- The application form and all attachments must be in English, except when it is explicitly stated that it must be in Danish
- An applicant applying for project funding on behalf of a cooperative group, e.g., DMCG, can also apply for and obtain funding for their own project
- It must be clearly stated if funding is applied for on behalf of a cooperative group in the field Cooperative Group under Project Information, and a statement from the group must be enclosed in Attachments

4.5 Budget

Further details regarding the budget and application system can be found in section [12. The Application system and forms](#)



5. Young Talented Cancer Researchers – research careers and postdoctoral fellowships

Application deadline	20 May 2026 at 15.00
Funding area/form	Young Talented Cancer Researchers - Research Careers Young Talented Cancer Researchers - Postdoc Fellowships
Pool	Up to DKK 20m, of which DKK 10m are expected from the Knæk Cancer collection
Requirement	Grantees who have received Knæk Cancer funds are requested to contribute to the communication about the granted project.
Assessment committee	The Danish Cancer Society's Scientific Committee – Young Talented Cancer Researchers (KBVU-UTK)
Notification	End-September (preliminary notification) and end-November (final notification)
Funding start date	A grant can be used from 1 January the following year



5.1 Purpose

The Danish Cancer Society wants to support young talents and their development in cancer research. Therefore, support is provided to younger researchers through project funding and postdoctoral fellowships.

Project funding for the establishment of research careers

The aim is to support the continuous development of young independent cancer researchers who have earned a PhD within the past eight years and have demonstrated the ability to conduct high-level international research. The support is allocated to outstanding and ambitious projects within all aspects of cancer research. The funds are allocated to researchers who have already demonstrated their potential by having already obtained support for their salary; however, you can apply for up to 50% buyout from clinical work.

Applicants must demonstrate genuine independence by describing how they intend to establish their own research group and conduct independent research. It is particularly emphasised that the research must be independent of their former mentor.

Postdoctoral fellowship in Denmark and abroad

The aim is to support younger researchers with a PhD or equivalent degree who have not yet secured a permanent position but can document research experiences to conduct an independent cancer research project in Denmark or abroad.



Postdoctoral fellowships abroad are allocated to Danish researchers who go abroad to conduct an independent cancer research project and gain knowledge and experience in an international research environment. The grant is awarded exclusively to researchers employed at a Danish institution during their stay.

5.2 Establishment of research careers for young talented cancer researchers

5.2.1 You can apply for

- Scientific and technical assistance (e.g., salary for PhD students, laboratory technicians, etc.)
- Specific running costs directly linked to the individual research project
- Equipment up to a total of DKK 100,000
- Travel costs - a maximum of DKK 12,000 can be applied for travel in Europe (excluding Denmark) and DKK 20,000 for travel overseas to a researcher paid by the project – please follow the guidelines for stay abroad for less than one month's duration

5.2.2 You cannot apply for

- Own salary – however, you can apply for up to 50% buyout from clinical work
- Please read section [3.1](#) You can, in general, not apply for support for

5.2.3 Please note

- Your PhD degree must not be more than eight years old by the application deadline. An exemption from the requirement of a maximum of eight years of PhD can be granted for periods of leave, such as maternity, parental, sick, and care leave, as well as military service. Professional issues, such as education, clinical training, and the like, that are a necessary part of a career and for which time for research has been limited, can also be considered
- Clearly describe how you will establish your own research group and conduct independent research that is distinct from your former mentor's research.
- It is a precondition that the host institution gives priority to the area with the necessary facilities and resources/co-financing
- Postdoctoral fellows can apply if they have already secured their independent position
- The application form and all attachments must be in English, except when it is explicitly stated that it must be in Danish
- A maximum of DKK 4m can be applied for up to 4 years
- The applicant must have documented relevant research experience and must, as a minimum, be a first author of one article (preferably more) in an international journal with peer review or similar
- Senior researchers/associate professors and professors are not eligible to apply for this funding pool

5.2.4 Budget

Further details regarding the budget and application system can be found in section [12. The application system and forms](#)



5.2.5 The application MUST contain

- A description of your career plan in Project Information
- An overview of previous research results in Project Information
- Information on collaborators in Responsible Manager and Collaborators and statements in Attachments
- Letter of recommendation by the host institution in Project Information
- Information about co-funding, including salary, from the host institution, should be specified in Provided by Workplace under Budget and Managing

The application will be administratively rejected if the above points are not met.

5.3 Postdoctoral Fellowship in Denmark

5.3.1 You can apply for

- Postdoctoral Fellowship in Denmark (fixed amount)

In the budget, you specify the postdoctoral fellowship as a fixed amount of DKK 845,000 for 12 months (70,416.67 per month) for your own salary and running costs. The difference between the financial framework of DKK 845,000 and the actual salary can be used for running costs. The necessary running costs must be specified under Details or Detailed budget information. If you, for instance, work part-time on the project for an entire calendar year, you specify 6 months of fellowship in the application budget (DKK 422,500).

5.3.2 You cannot apply for

- Salary for other staff for more than three months per year
- Please read section [3.1](#) You can, in general, not apply for support for

5.3.3 Please note

- You must, as an applicant, have documented relevant research experience and must, as a minimum, be the first author of one article (preferably more) in an international journal with peer review or similar
- It must not be more than 4 years since you obtained your PhD by the application deadline (excluding periods of leave)
- Normally, the framework grant is allocated for up to a maximum of 3 years full-time and 4 years part-time
- Among others, part-time postdoctoral fellowships can be applied for by doctors who are undertaking a clinical specialist education to be employed for up to 4 years in the hospital where their clinical education takes place
- The committee is favourably disposed towards researcher mobility, thus researchers who change the setting or travel abroad. However, in Detailed budget information – it is possible to state reasons for continuous research at the current place of work
- PhD certificate must be uploaded to Project Information
- A statement from the supervisor must be uploaded to Project Information



- PhD students can apply if the supervisor's statement is attached, confirming the expected delivery of the PhD thesis within 10 months after the application deadline. If the grant is awarded, the project cannot start before the PhD degree has been obtained, and the Funding Section has received documentation
- The application form and all attachments must be in English, except when it is explicitly stated that it must be in Danish

5.3.4 Budget

Further details regarding the budget and application system can be found in section [12. Application system and forms](#).

5.4 Postdoctoral Fellowship Abroad

5.4.1 You can apply for

- Own salary (fellowship)
- Travel costs and visa
- Freight charges
- Health insurance
- Extra costs for stay and accommodation
- Costs related to the establishment of stay exceeding 3 months

5.4.2 You cannot apply for

- Running costs in relation to a research stay abroad
- Trips initiated before the application deadline
- Childcare, per diems or local transportation during the stay abroad
- Please read section [3.1](#) You can, in general, not apply for support for

5.4.3 Please note

- It must not be more than 4 years since you obtained your PhD degree by the application deadline (excluding periods of leave)
- The fellowship is allocated as a specific grant for salary and travel costs for a maximum of 3 years
- PhD certificate must be uploaded to Project Information
- A statement/invitation from the host institution abroad must be uploaded to Attachments
- A statement from the supervisor must be uploaded to Project Information
- To inform about provider obligations, if any, in the budget
- The application form and all attachments must be in English, except when it is explicitly stated that it must be in Danish
- To account for the length of stay and expected benefits
- To account for the place of stay for the research stay

5.4.4 Budget

An estimate of the income and expenses of the stay abroad must be stated. The funding will be allocated based on the duration of the stay and funding from other sources for the



same purpose.

The rate for a fellowship abroad

Postdoc fellowship abroad

735,000 DKK/year

Any excess salary framework grant must be paid back to the Danish Cancer Society.

Travel costs

The cheapest way of public transportation is granted for the journey. If the stay exceeds 6 months, the grant also covers the travel costs of family members (spouse/cohabitee and children – please see the definition of provider obligations below). An extra homeward journey is covered if the family does not travel with the fellow.

Freight costs

Reasonable transportation costs for household effects are covered. Transportation of furniture, cars, and similar large objects is not covered.

Travel insurance

It is recommended to take out travel insurance, and the Danish Cancer Society will cover reasonable costs for this travel insurance.

Extra costs for stay and accommodation, as well as start-up costs

Extra costs for stay and accommodation will be covered. Additionally, it is possible to apply for start-up costs as a lump sum of DKK 15,000 if the stay exceeds 3 months. Support for extra and start-up costs must cover all other expenses, except the above.

Rates

A maximum of the following rates below will cover extra stay and accommodation costs.

USA, Canada, Australia, New Zealand, and Japan	
Single	DKK 14,000 per month + DKK 15,000 for start-up costs (when the stay lasts for more than 3 months)
Provider	DKK 16,000 per month + DKK 15,000 for start-up costs (when the stay lasts for more than 3 months)
Western Europe	
Single	DKK 10,000 per month + DKK 15,000 for start-up costs (when the stay lasts for more than 3 months)
Provider	DKK 12,000 per month + DKK 15,000 for start-up costs (when the stay lasts for more than 3 months)
Other countries	
Will be set on an ad hoc basis. The applicant must give a well-founded proposal.	



Information about the provider's status must be stated in the application; otherwise, a potential grant will be calculated at the single's rate.

A provider is a person who

- Is married, or
- Has dependent children under the age of 18, or
- Has lived with someone as a spouse or similar and has had the same address for at least 12 preceding months

Two persons eligible for funding with the same address and communal housekeeping can, at most, receive funding equivalent to that for one person with provider obligations from the Danish Cancer Society and other sources (Danish or foreign).

Further details regarding the budget and application system can be found in section [12. The application system and forms](#).



6. Knæk Cancer (KC) – Project support for strategic focus areas

Application deadline	22 January 2026 at 15:00
Funding area/form	Knæk Cancer + the allocation name
Pools	Please refer to the homepage www.cancer.dk/opslag
Requirement	Grantees who have received Knæk Cancer funds are requested to contribute to the communication about the granted project
Assessment committee	Knæk Cancer committees
Notification	End-June (preliminary notification) and end-November (final notification)
Funding start date	From 1 January the following year

6.1 Purpose

The Danish Cancer Society provides project support for strategic focus areas. Through funding from Knæk Cancer, support is provided for high-quality scientific cancer research projects to help achieve our goals of fewer people getting cancer, more people surviving cancer, and a better life after cancer. In selected focus areas, support is also provided for development projects – this will be specified in the particular call.

Research projects

Applications for research projects are submitted, assessed, and processed in the same way, regardless of which pool or committee within the Danish Cancer Society is being applied to. However, when applying for Knæk Cancer funds, it is essential to familiarise yourself with the specific focus areas and tailor your project and application to the criteria stated in this year's Knæk Cancer call, and tick the box in the application form indicating that it is a research project.

Research is defined as systematic work aimed at increasing existing knowledge and developing new applications of existing knowledge. Research projects answer research questions and test hypotheses using recognised methods for collecting and analysing data.

Research projects are typically applied for and led by scientific staff, such as PhD students, postdocs, associate professors, or professors, preferably in collaboration with other research environments, healthcare professionals, clinicians, and other relevant professional groups, and preferably across Denmark.

See section [3.2](#) for the committee's prioritisation criteria for research applications.



Development projects

Selected Knæk Cancer focus areas are open for applications for development projects (Development project) – this is particularly specified in the call.

It is essential to tailor the development project and application to the criteria stated in this year's Knæk Cancer call, and to tick the box on the application form indicating that it is a development project. Only select Development project if your project is not a research project.

Development projects may include, for example, the development of new digital tools, mapping, analysis, demonstration, quality, intervention, development, and implementation projects throughout the cancer course – from prevention and early detection to follow-up, rehabilitation, and palliative care.

Development projects must be based on systematic work, grounded in research and practice, and aim to create or improve products, activities, processes, or organisation and knowledge for the benefit of citizens and patients.

Development projects are typically applied for and led by healthcare professionals, clinicians, graduates in health and social sciences, and other relevant professional groups, preferably in interdisciplinary collaboration between, for example, companies, universities, public institutions, and municipalities to share knowledge and increase the project's potential for success, preferably across Denmark.

The assessment of a development project application is generally based on many of the same criteria as a research project, but there are some differences – see here what the committee's prioritisation of a development project application is based on:

- Cancer relevance
- Purpose – must be clearly described and relevant to the cancer course and life with and after cancer (prevention, early detection, treatment, rehabilitation, late effects, palliative care, patient and volunteer initiatives, etc.)
- Quality
- Feasibility – the project's methodology must be well described and realistic, and there must be a clear link between activities, resources, and expected results, as well as, if relevant, a plan for implementation, evaluation, and follow-up
- Innovation or optimisation – the project must contribute something new or significantly improve existing practice, and preferably be implementable
- Applicant's qualifications, including the necessary professional and practical competencies to carry out the project
- Applicant's environment, including relevant partners, for example, across professional groups, institutions, or sectors
- The application's budget – must be realistic and well justified in relation to the project's activities and objectives
- Dissemination and anchoring – considerations regarding a plan for knowledge sharing, anchoring, and any potential for spreading to other areas after the project period
- Patient and user involvement – read more in section [3.3](#)



For the assessment of development projects, there is no requirement regarding the number of publications or H-index, but the field must still be completed in the application form.

6.2 You can apply for

- Scientific and non-scientific assistance (e.g., salary to a PhD student, postdoc, laboratory technician, statistician, health care professionals, clinicians, health and social science graduates, and other relevant professional groups)
- Up to 20% of your salary as a buyout, however, up to 50% buyout for clinical work. For development project applications, it is possible to argue for up to 50% buyout for relevant professional groups, such as municipal and privately employed staff
- Salary for a highly qualified guest researcher for a maximum period of up to 2 years
- Specific project-related running costs directly linked to the individual project, including minor expenses for network collaboration
- Equipment up to a maximum of DKK 100,000
- Travel costs for a researcher staying abroad paid by the project – please follow the guidelines for stay abroad for less or more than one month's duration

6.3 You cannot apply for

- Own PhD salary or project funds at all, as PhD students cannot apply for funding on their own - PhD salary can be applied for by the supervisor or another experienced researcher
- Own postdoctoral salary - postdoctoral fellows must apply the Young Talented Cancer Researchers pool to cover their salary
- Salary for scholars (research year students) – this must instead be applied for as a Scholarship by the student
- Workshops and general catering for meetings
- Please read section [3.1](#) You can, in general, not apply for support for

6.4 Please note

- The rules of the Knæk Cancer applications can vary depending on the call – therefore, always read the call thoroughly
- The applied amount must be a minimum of DKK 300,000 in total and a maximum of DKK 2m per year (DKK 6m in total) unless another amount is stated in the call for the specific Knæk Cancer pool
- Applications that do not include funding for the next year but only the succeeding year will be rejected
- Funding for long-term projects can generally be applied for up to 3 years
- Funds cannot be re-applied for the same project or fellowship within the same year, regardless of the pool and applicant
- Re-application of a project or fellowship the following year cannot be sent without significant relevant changes



- The applicant for research projects must have documented relevant research experience and must, as a minimum, be a first author of 1 article (preferably more) in an international journal with peer review or similar – this does not apply to applicants for development projects
- An applicant who applies for funding on behalf of a cooperative group, e.g., DMCG, can simultaneously apply and obtain a grant for their own project.
- It must be clearly emphasised if the application is made on behalf of a cooperative group in the application's field Cooperative Group under Project Information, and a statement from the group must be enclosed in Attachments

6.5 Budget

Further details about the budget and the application system can be found in [12. Application system and forms.](#)



7. Knæk Cancer (KC) – Professorship

Application deadline	20 May 2026 at 15.00
Funding area/form	Professorship
Pool	Please refer to the homepage www.cancer.dk/opslag
Requirement	Grantees who have received Knæk Cancer funds are requested to contribute to the communication about the granted project
Assessment committee	Ad hoc committee
Notification	End-November 2026
Funding start date	A grant can be used when the grant holder has been assessed as professor-qualified, and from the date agreed upon and stated in the agreement on the professorship between the Danish Cancer Society, the university, and the region/clinic

7.1 Purpose

The Danish Cancer Society aims to, through support for one professorship per year, strengthen academic development in selected environments, improve interdisciplinary and cross-sector collaboration and national knowledge sharing, as well as ensure a more solid anchoring of specific cancer research areas. The professorships are five-year positions, and the subject of the professorship for the year is announced on www.cancer.dk/opslag.

7.2 You can apply for

- Salary for professor (own salary) for 5 years
- Salary for PhD students or postdocs
- Running costs for research in accordance with section 12.7
- Running costs for the establishment of a national network, including reasonable expenses for catering at meetings and transport

7.3 You cannot apply for

- Before you apply, please read section [3.1](#) You can, in general, not apply for support for



7.4 Please note

- Conditions stated in the call regarding
 - Requirements for the application
 - Special conditions for the applying university
 - Requirements for the applicant
 - Practical information
 - Read the call-specific guidelines carefully in relation to completing the application form
- A maximum of DKK 12m can be applied for, distributed over 5 years
- The application and all attachments must be written in English, except when it is stated explicitly that it must be in Danish

7.5 Budget

Further details about the budget and the application system can be found in [12. Application system and forms](#).



8. Stay abroad exceeding 1 month - without salary

Application deadline	20 May and 8 October 2026 at 15:00
Funding area/form	Stay abroad exceeding 1 month
Assessment committee	A committee consisting of members from both KBVU-BK and KBVU-MS
Notification	Expected at the end of June and the end of November respectively
Funding start date	A grant can be used no earlier than either July 1 or December 1, once notification about the application has been received



8.1 Purpose

The Danish Cancer Society wants to support young Danish researchers/scientists, such as PhD students, postdoctoral fellows, lecturers, and junior doctors in training, who travel abroad to conduct an independent cancer research project and to obtain knowledge and experience in an international research environment and who have already received funding for their salary.

8.2 You can apply for

- Travel costs and visa
- Freight costs
- Health insurance
- Extra costs of stay and residence
- Establishment of stay exceeding 3 months

8.3 You cannot apply for

- Salary
- Running costs in relation to the research stay abroad
- Trips initiated before the start of the application period, 1 July and 1 December, respectively
- Childcare, per diems or local transportation during the stay abroad
- Expenses for supervision and courses in connection with PhD studies
- Trips for supplementary training – exempted from the rule is supplementary training with a dedicated scientific and development scope – such as new cancer therapeutics or diagnostic methods connected with an ongoing research project.
- Before you apply, please read section [3.1](#) You can, in general, not apply for support for



8.4 Please note

- Statement/invitation from the host institution abroad must be attached
- Statement from the supervisor must be uploaded to Project Information
- To account for the length of stay and expected benefits
- To account for the place of stay for the research stay
- To inform about provider obligations, if any, in the budget
- Typically, the grant is allocated for a specific travel grant covering travel costs up to a maximum of 3 years
- You can receive support for a maximum of one trip of either less than or more than 1 month per year
- The application form and all attachments must be in English, except when it is explicitly stated that it must be in Danish

8.5 Budget

An estimate of income and expenses related to the stay abroad must be provided. The funding will be determined based on the duration of stay and potential funding from other sources for the same purpose.

Travel costs

Support is provided for travelling out and back using the most economical means of public transport, as well as visa costs. When the stay lasts for more than 6 months, the grant also covers the travel costs of family members (spouse/cohabitee and children; please see definition of provider obligations below). An extra homeward journey is covered if the family does not travel with the fellow.

Freight costs

Reasonable costs for transporting household effects are covered. Transportation of furniture, cars, and similar large objects is not covered.

Travel insurance

It is recommended to buy travel insurance. It is often possible to obtain travel insurance through your employer. If not, the Danish Cancer Society will cover reasonable travel insurance costs.

Extra costs for stay and accommodation, as well as the start-up costs

Extra costs for stay and accommodation will be covered. If the visit lasts more than 3 months, it is possible to apply for start-up costs as a lump sum of DKK 15,000. Support for extra costs and start-up costs must cover all other expenses, except those mentioned above.



Rates

Extra costs for stay and accommodation will be covered up to the maximum of the following rates.

USA, Canada, Australia, New Zealand and Japan	
Single	DKK 14,000 per month + DKK 15,000 for start-up costs (when the stay lasts for more than 3 months)
Provider	DKK 16,000 per month + DKK 15,000 for start-up costs (when the stay lasts for more than 3 months)
Western Europe	
Single	DKK 10,000 per month + DKK 15,000 for start-up costs (when the stay lasts for more than 3 months)
Provider	DKK 12,000 per month + DKK 15,000 for start-up costs (when the stay lasts for more than 3 months)
Other countries	
Will be set on an ad hoc basis. The applicant must give a well-founded proposal	

Information about your provider status must be stated in the application; otherwise, a potential grant will be calculated per the singles' rate.

A provider is a person who

- Is married, or
- Has dependent children under the age of 18, or
- Has lived with someone as a spouse or similar and has had the same address for at least 12 preceding months

Two persons eligible for funding, with a communal address and housekeeping, can, at most, receive funding equivalent to that for one person with provider status from the Danish Cancer Society and other sources (Danish or foreign).

Further details regarding the budget and application system can be found in section [12. The application system and forms](#).



9. Stay abroad for less than 1 month - without salary

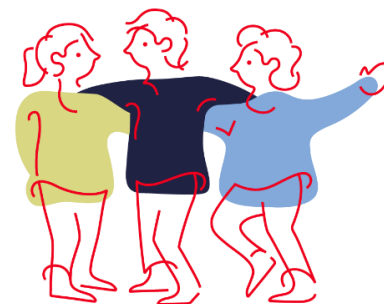
Application deadline 20 May and 8 October 2026 at 15:00

Funding area/form Stay abroad for less than 1 month

Assessment committee A committee consisting of members from both [KBVU-BK](#) and [KBVU-MS](#)

Notification End-June and end-November

Funding start date The travel can be made no earlier than the stated application deadline; however, please be aware that the notification about a possible grant will not be given until the end of either July or November, respectively



9.1 Purpose

The Danish Cancer Society wants to support younger researchers, such as PhD students, postdoctoral fellows, lecturers (adjuncts/assistant professors), and younger trainee doctors, who travel abroad for a short-term stay to attend a meeting or conference. See who cannot apply in 8.4)

9.2 You can apply for

- Stays abroad for up to 1 month (31 days) duration in connection with a short-term trip to visit collaborators, as well as attendance in meetings and conferences, where you present your research results by way of lectures or posters
- Trips in Europe (excluding Denmark) up to a maximum of DKK 12,000
- Trips overseas up to a maximum of DKK 20,000

9.3 You cannot apply for

- Expenses defrayed before the date of application
- Payments for supervision and courses in connection with PhD studies
- Trips for supplementary training – exempted from this rule is supplementary training with a dedicated scientific and development scope – such as new cancer therapeutics or diagnostic methods connected with an ongoing research project. Technical supplementary training of non-scientific staff – for example, training in new techniques and use of new advanced equipment – must be applied for as project support in connection with a project application
- Conferences in Denmark – but it is possible to apply for the conference fee if a big international conference is held in Denmark for one year.
- The daily allowances must cover local transport expenses abroad
- Before you apply, please read section [3.1](#) You can, in general, not apply for support for



9.4 Please note

- You can receive support for a maximum of one trip of either less than or more than 1 month per year
- The following persons cannot apply for and receive funding
 - Students/persons with no candidate degree
 - Lecturers (associate prof.), chief physicians, professors
 - Researchers who work at a research institute abroad at the time of travelling
- The application form and all attachments must be in English, except when it is explicitly stated that it must be in Danish
- When applying for a meeting or conference attendance where you present your research results by way of lectures or a poster, the abstract (in English) must be uploaded to Project Information
- A recommendation from the main supervisor/head of department (max. 1 A4 page) must be uploaded to Project Information
- If you apply for a study stay or a trip to a collaborator, you must upload an invitation from the host institution and a recommendation from the main supervisor to Project Information
- You must inform the Danish Cancer Society if you receive funding from other sources. If second funding exists, a potential grant from the Danish Cancer Society will be reduced accordingly
- When applying, it is unnecessary to have approval that the abstract is accepted for presentation by way of lectures or posters, as the approval can be sent later. If acceptance is not available at the time of assessment, a grant can be given if acceptance is granted subsequently
- If you apply for specific budget items from other sources, you must specify that source in the budget
- If several persons from a group of collaborating researchers apply for support to attend the same conference, usually only one researcher can obtain support for attendance

9.5 Budget

Travel costs

As travel grants are provided within a limited framework, the cheapest transport options, such as trains or low-cost flights, must be used to the fullest extent. Support for more expensive stays abroad cannot be expected unless there are specific reasons, which should be stated in the application. Therefore, it is essential to plan travel well in advance. If it appears after a possible grant has been awarded, it is necessary to use a different form of transport than the one stated in the application; the Danish Cancer Society must approve this before travelling.

Original tickets, receipts for transportation to and from the airport, invoices, and other relevant documentation must be attached when submitting the financial report.



The daily allowance covers local transport once you reach the destination (see below); therefore, no documentation is required.

Conference fees

- It must be stated to what extent the fee covers ordinary meals. The part of the fee which concerns large social arrangements is not covered
- Original receipts and the registration form specifying what the fee covers must be attached as documentation when submitting the financial report.

Accommodation costs

- At a maximum, it is granted corresponding to the circular from the Ministry of Finance regarding compensation in the form of a daily allowance during official journeys abroad
 - Read more on www.medst.dk - under Cirkulære om satsregulering for Tjenesterejser
- Daily allowances are calculated on an hourly basis at 1/24 of the current country rate of destination. The rate is also valid for travelling hours in Denmark.
- Travel time with means of transport, in which meal expenses are included in the ticket price, is not included when calculating the daily allowance. If the trip includes more than one country, the rate of the country in question is used when the journey to the new country begins
- If meal expenses are covered in advance (e.g., through fees or in connection with overnight stays), the daily allowance is reduced to 25%. The daily allowances, including local transportation, etc., must cover the remaining expenses connected with the stay. If only certain meals are included, the daily allowance is reduced accordingly. Breakfast is calculated at 15%, lunch at 30% and dinner at 30%
- Hotel expenses are refunded according to the maximum of the circular of the Ministry of Finance. The original hotel receipt must be attached when submitting the financial report

Further details regarding the budget and application system can be found in section [12. The application system and forms](#)



10. Scholarship

Application deadline	20 May and 8 October 2026 at 15:00
Funding area/form	Scholarship
Assessment committee	A committee consisting of members from both KBVU-BK and KBVU-MS
Notification	End-June and end-November Rejections will not be reasoned
Funding start date	A grant can be used no earlier than either July 1 or December 1, once notification about the application has been received



10.1 Purpose

The Danish Cancer Society wants to support young students who aspire to careers in cancer research. Students can apply for support to conduct a full-time cancer research project for a specified period, thereby extending the study beyond the stipulated time. The project is expected to go beyond what is normally required of a thesis.

10.2 You can apply for

- Scholarship (fixed frame of DKK 12,000 per month) for up to 12 months

10.3 You cannot apply for

- Running costs, etc.
- Before you apply, please read section [3.1](#) You can, in general, not apply for support for

10.4 Please note

- A scholarship is personal and must be applied for by the student
- Typically, science speciality students must have worked at least 4-6 months on the project before the scholarship period (the bachelor project period does not count). However, this is not mandatory for medical students accepted at a pre-graduate research institution
- A PhD student attending a training course and persons with a candidate degree cannot apply for a scholarship
- The application form and all attachments must be in English, except when it is explicitly stated that it must be in Danish
- It must be confirmed that the applicant will get qualified study guidance at the place where the project is conducted. Therefore, the following must be uploaded



- A declaration from the workplace that they will host the project and put the necessary means at the disposal
- A recommendation from the main supervisor of max. one A4 page. The recommendation must include confirmation that the applicant will extend the study period beyond the stipulated time, which is a prerequisite for a grant. Meaning that the study MUST be on hold for the scholarship period
- You are not allowed to receive SU at the same time as you have a scholarship
- If you have a second job in the same period, it must be stated in the application
- A grade transcript from the university must be uploaded. **CPR number must not appear in the uploaded transcripts**
- It is expected that the project can be finalised within the scholarship period
- The workplace pays out the scholarship and is not entitled to holiday pay
- The scholarship is reported to SKAT but without deduction of AM-bidrag (Labour Market Contribution) and ATP (Danish Labour Market Supplementary Pension)

10.5 Budget

It is not necessary to submit a budget when applying for a scholarship.

10.6 Project description

The applicant must write the project description in person, and the oncological or psychosocial relevance must be stated. Besides this, the project description must include the following

- Problem and relevance
- Objectives
- Methods
- Project plan and organisation
- Target group
- Impact
- Ethical perspectives
- Main risks and management
- Dissemination
- Information about the practicalities of the completion of the project
- Information about the specific tasks for which the scholarship is to be used



11. The Danish Cancer Society's Research Talent Awards

Deadline for nomination **2 March 2026 at 15:00**

Funding area/form Research Talent Award - Basic, biological, and epidemiological cancer research
Research Talent Award - Clinical Cancer Research

Pool 2 x DKK 150,000

Assessment committee [KBVU-BK](#)

Notification Ultimo August/primo September
Rejection will not be reasoned

Funding start date The awards will be presented in August at [the Danish Cancer Research Days](#), arranged by [DCCC](#) and [DMCG](#), and the award can be used from 1 September



The award is granted for research-related costs, for example

- Travel costs in connection with conferences, courses, and meetings with collaborators
- Purchase of research-related computer
- Laboratory equipment
- Materials

11.1 Purpose

Each year, the Danish Cancer Society allocates two Awards to support talented young researchers who have made an exceptional contribution to Danish cancer research. The award is allocated to young researchers who have demonstrated extraordinary research effort or achieved significant international breakthroughs and awareness results.

Two awards are allocated, one within basic, biological, and epidemiological cancer research, the other within clinical cancer research.

The award is DKK 150,000 and will be presented at the Danish Cancer Research Days organised by DCCC and DMCG. The award can be used from 1 September.



11.2 Nomination of a candidate for a Research Talent Award

Research directors and supervisors can nominate qualified candidates for the two Awards.

- The nominated candidate must be under the age of 40 by the nomination deadline (any leave periods are not taken into account except for maternity and parental leave)
- The nomination must be in English and include the following
 - Motivation
 - Description of the candidate's research effort and the cancer relevance. It must clearly describe what defines the candidate's extraordinary efforts and results. By nomination of a student, the research, which stands out from standard practice, must be described
 - Short CV including a list of publications
- Research directors or the supervisor nominate and submit via the application system

Further details regarding the budget and application system can be found in section [12. The application system and forms](#)



12. The application system and forms

Access to the application and reporting system is available via the Danish Cancer Society's homepage www.cancer.dk/ansoegning.

Only **one profile** per person is allowed; once the application is completed, it is not permitted to change the profile. A new application must be made in the correct applicant's name in such cases. Contact Funding and Follow-up if you have created two profiles so that they can be merged.

The personal data is used to quickly and securely identify your application and communicate with you as an applicant. The information must be continuously updated to ensure it remains correct.

You can edit the application (draft) until the application deadline, at which point you can choose to submit it by pressing Submit at the bottom of the page. After submitting, you will no longer be able to edit your application.

Corrections and updates to the application (draft) can be made by navigating to your front page, where you can find your applications under My applications.

Remember to save whenever new information or corrections are entered before leaving each tab or the application. Press Save changes at the bottom of each tab.

All mandatory fields must be completed before you can submit the application. If a field needs to be filled in, it will appear in red at the top of the form when you press Submit.

A minimum or maximum number of characters is specified in several fields; if not adhered to, it is impossible to submit the application.

Please note that Word and the application form count characters differently.

Co-writing Associate

When you have created an application, you can add one or more Co-writing Associate(s) who can assist you in completing the individual application. However, a Co-writing Associate cannot submit the application.

The association only applies to the specific application or grant. This means that you can add different people to different applications and grants.

If your application results in a grant, a Co-writing Associate can also create, complete, and submit reports on your behalf regarding that specific grant.

Application forms

The application forms for the several funding areas and application types can differ in layout and number of tabs. In the following paragraphs, the application form will be described



in general terms, with a primary focus on project applications (including applications for careers, postdoctoral fellowships, stays abroad exceeding 1 month, and professorships). Still, the information can also be used in other types of applications.

The application form is divided into 4 tabs

Tab 1 Terms and Conditions

Tab 2 Project Information

Tab 3 Applicants CV and Publications

Tab 4 Attachments

At the top of the application, you will find two red buttons

- View/Print – here you see the complete application, which you can export to a PDF file and print
- View Guidelines – here you will come to our website, where you will find the application guidelines, etc.

12.1. Tab 1 – Terms and Conditions

In the first tab, you must read the ethical guidelines and confirm that you have read and accept the following

- Willing to follow the Danish Cancer Society's ethical guidelines and The Danish Code of Integrity in Research - read more [here](#)
- That you have not received support from companies, groups, foundations, etc., whose production or turnover is to a significant extent current income from the production and sale of tobacco products

12.2. Tab 2 - Project Information

It is essential to begin by selecting the correct form, as this is crucial for answering the application's questions accurately

1. Choose the Type of application
2. Press Save My Work at the bottom of the page

You will also be guided by help texts within the application form.

Project information is divided into 8 subcategories

1. Project Information
2. Workplace of the Project
3. Focus of the Project
4. Project Description
5. Responsible Manager and Collaborators
6. Danish Part of the Application
7. Budget and Managing
8. Information on Managing Institution

12.2.1 Project Information

Here, you fill in the project title, which will, among other things, be used in connection with the announcement of a possible grant.



12.2.2 Workplace of the Project

Fill in where the project is to be carried out and whether you are applying on behalf of a group.

Important

- If your project takes place at a hospital, please state the hospital, not the region
- If the institution is outside of Denmark, please choose Foreign Institution
- For Stay Abroad applications, always choose Foreign Institution
- If you cannot find your institution, leave the field empty

12.2.3 Focus of the Project

Here, the effort area, research area(s), disease area(s) and focus group are filled in.

12.2.4 Project Description

Here, you fill in information about the project, its cancer relevance, previously submitted applications for the same project, the reference list, your role in the project, and patient involvement.

Project Description

The project description must be in English.

If the project description has been prepared as a Word document, it can be transferred to the application form by copying the text into the application form. Any images and figures are attached in the Attachments tab as PDF files. It is not possible to format text with bold, italics, etc., but it is a good idea to divide the text into visible sections, use numbering, and, for example, use Caps Lock in some headings, for readability.

The project description must include

When applying for project support, the Young Talented Cancer Researchers pool, postdoctoral fellowships, and stays abroad exceeding 1 month, the project description must include

- Information about the purpose of the project (research question)
- Information about the preliminary studies that underlie the research plan
- Research plan, including methods and timeline
- Statistical considerations, including strength calculations, also regarding animal research
- The practicability of the project (workplace, resources, etc.)
- Information about to what extent the project will have an impact on the patients' cancer course
- Description of which clinical perspectives are related to the project and how project results can be widely or systematically implemented for the benefit of the patient in the clinic
- Novelty value and information about the applicant's knowledge of, or contact with, researchers working on the same or similar type of project in Denmark or abroad, as well as an assessment of the project's significance internationally
- A statement on whether the project is subject to ethical restraints. If this is the case, it must be justified how the necessary measures of the project have been or will be met (e.g., by recombinant experiments, animal experiments or clinical trials)



In separate fields

- A description of potential patient involvement in the project – from preliminary preparation to implementation. If it is estimated that patient participation is not possible or suitable, this should be explicitly stated in the project description
- A description of the cancer relevance

12.2.5 Responsible Manager and Collaborators

Responsible Manager

Here, the manager in charge of the institution's research and budget responsibilities for the project must be stated for digital management approval of the application. By approving the application, the manager confirms and accepts that the stated project can be carried out in the department/institute and that the necessary facilities and resources are available.

Applicants cannot approve their own application. If the applicant is the head of the institution, another executive at the same or higher level must provide the digital management approval.

Before the digital management approval, as much as possible, must be completed and saved, e.g., the project title, project description, and short project description.

Management approval is obtained by clicking the link in the email that the executive receives. If the executive does not receive an email, it might have been caught in a spam filter. If so, the executive can be deleted and re-created with an alternative email address. The applicant may also request the executive to send an email to forskningsbevilling@cancer.dk stating that the project can be conducted at the institution. The application cannot be submitted before the management approval is completed.

A statement from the host institution (max. 1 A4 page) can be uploaded under Project Information.

Collaborators

National and international collaborators can strengthen your application, and it is a prerequisite for your application that the following collaborators are set up

- Mentors, when applying for a postdoctoral fellowship
- Named scientific assistants and postdoctoral fellows when applying for their salary (a short CV and a list of publications must be uploaded)
- External collaborators who contribute substantially to the project when applying for projects
- Guest researchers (a short CV and list of publications must be uploaded)

Collaborators who are set up will automatically receive an email confirming their agreement to collaborate on the project. Confirmation is completed by clicking the link in the email they receive. If collaborators do not receive an email, it might have been caught in a spam filter. If so, they can be deleted and set up again with an alternative email address. The ap-



plicant may also request that the collaborator send an email to forskningsbevilling@can-cer.dk confirming approval as a collaborator on the specific project. The application cannot be submitted before the collaborator's approval is completed or the collaborator is deleted again.

12.2.6 Danish Part of the Application

For the benefit of patient representatives in the Danish Cancer Society's scientific committees and the Danish Cancer Society's communication efforts, a Danish lay description must be provided, and a question must be answered in Danish.

The lay description must be precise and easily read by all, without medical or scientific terms, abbreviations, etc. The description must include the project's purpose and novelty, a research plan, and an assessment of the project's potential impact and feasibility. We recommend that you have a layperson review the text before submitting it.

12.2.7 Budget and Managing

Here, you fill in the budget items and specify where a potential grant will be administered.

Before you fill in the budget, please read section [3.1](#) You can, in general, not apply for support for.

The budget must be written in English and include several items compiled into a budget overview.

Budget items must be allocated to the project years for which support is being sought from the Danish Cancer Society, and it must be stated if funding for the project has been applied for or granted from other sources. All amounts must be in Danish kroner, and please specify the year the cost relates to in Details. Furthermore, if there are specific circumstances concerning a budget item, these must also be stated in Details or Detailed budget information. If the project is broken down into subprojects with separate budgets, this should be mentioned here as well. The budget must be specified and justified in Detailed budget information.

The first year in the budget = the first potential funding year. If any, former project years can be stated in Detailed budget information.

Applied funds must cover price and salary increases for the entire grant period, as a potential grant cannot be overspent.

If you have applied for funding from other sources, it must be stated in the budget where you have applied for funding, along with the expected notification date.

In connection with applications for salary expenses, the period of employment (hours, months, or years) must be specified for each budget year. For the number of months, indicate the number of months the person is expected to be employed full-time – for example, the employment period for a person working half-time on the project for a full calendar year should be stated as 6 months.



A salary for the same scientific assistant/PhD student is typically granted for a maximum of 3 years in total on a full-time basis.

The detailed budget should be specified in the following cost categories

- Salary, scientific staff
- Salary, technical staff
- Running costs
- Equipment, purchase, and leasing (up to a total of DKK 100,000)
- Travel costs
- Other

Salary must be specified as

- Own salary
- Salary for scientific assistants/PhD students
- Salary for non-scientific assistance
- Salary for guest researchers
- Other types of salaries and fees (type must be indicated)

Salary rates

Salaries are paid in accordance with the collective agreement concluded with the relevant local negotiating organisation at the workplace.

Special allowances are given depending on the job category necessary for the project. Salary must not exceed the professional level required to implement the project.

Individual/personal qualification and responsibility allowances (kvalifikations- og funktionstillæg) are usually not granted. Committee approval must be obtained prior to payment of an individual/personal qualification or responsibility allowance. If applying for that kind of allowance, please include a project-related justification in the Detailed budget information.

Usually, salary grants are made through salary framework grants. Those grants cannot be overspent, and the remaining amount must be refunded.

A salary framework rate has been set for scientific assistants/PhD students, postdoctoral fellowships, etc. These framework rates must be used in the application, as they will be used to calculate a possible grant.

Salary framework rates for staff in project applications	
Scientific assistant/PhD student	625,000 DKK/year
Postdoctoral/lecturer/associate professor	735,000 DKK/year
Professor, including research professor	845,000 DKK/year
Framework rates for postdoctoral fellowships (personal)	
Postdoctoral fellowship in DK – Salary and running costs (unspecified)	845,000 DKK/year
Postdoctoral fellowship abroad	735,000 DKK/year



It is also possible to apply for grants for non-scientific assistants, including student assistants. You must indicate an hourly rate in connection with fees and hourly pay.

A postdoctoral fellowship must be applied for personally.

Postdoctoral fellowship in DK

A postdoctoral fellowship must be stated as a framework of DKK 845,000 for salary and running costs in the budget (70,416,67 per month). You can specify the necessary running costs within the framework in Details for the specific budget item or Detailed budget information.

Postdoctoral fellowship abroad

A postdoctoral fellowship abroad can only be used for the fellow's salary. The grant is awarded exclusively to researchers employed at a Danish institution during their stay.

Any excess salary framework grant must be paid back to the Danish Cancer Society.

Running costs

Running costs cover, e.g., materials, laboratory animals, publication costs (except for gold Open Access), and other project-related costs.

The budget for running costs must be specified in Details or Detailed budget information. Researchers affiliated with institutions obtaining VAT rebates must apply for running costs exclusive of VAT.

Travel costs

Please note that expenses for a **stay abroad of less than 1 month's duration in connection** with meeting and conference participation can be applied for separately under [Stay abroad less than 1 month](#).

It is primarily younger researchers, such as PhD students, postdoctoral fellows, lecturers, and younger doctors enrolled in education, who can obtain a travel grant. If more than one person in a group of collaborating researchers applies for funding to attend the same conference, only one will typically receive funding.

Travel and accommodation costs for trips to conferences, collaborators, meetings, etc.

Must be specified under transport, accommodation, and conference costs, respectively. Information about the name, destination, trip purpose, and relevance to the project must be stated in the application.

A maximum of DKK 12,000 can be applied for travel in Europe (excluding Denmark), and DKK 20,000 for travel overseas to a researcher paid by the project – please follow the guidelines for travel abroad for less than one month's duration.



Equipment

Applying for equipment up to a total of DKK 100,000 in a project application is possible. The selection of equipment must be justified.

It is a precondition for an equipment grant that the grant holder has the right to use the equipment as long as it is necessary for cancer research at the institution. The right of use can be transferred to other cancer researchers if the grant holder ceases to use the equipment. Researchers affiliated with institutions that obtain VAT rebates should apply for equipment exclusive of VAT.

If funds have not been allocated from other sources for the equipment's operation and maintenance, funding can be applied for from the Danish Cancer Society. The amounts must be specified as separate budget items in the application, and the need for the equipment must be explained.

12.2.8 Information on Managing Institution

Information about the administering institution and the contact person is filled in here.

12.3 Tab 3 – Applicant's CV and Publications

Here you fill in your CV, publications and previous grants from the Danish Cancer Society.

CV

The Curriculum Vitae must be short and precise and hold information about education, including dates of achieved Master's degree and PhD, if any, as well as current and previous employment. Please also state ORCID.

Publications

Please specify up to 20 publications relevant to the applied project, of which at least 10 are from the past 5 years. PubMed ID (PMID) or DOI should be specified opposite each publication.

It must be clearly specified which publications are accepted by international peer-reviewed journals.

H-index and the total number of publications should be stated, including the number of first-, last- and co-first/last authorships.

Previous grants

Applicants who have obtained project funding from the Danish Cancer Society within the last five years must provide information about previous grants from the Danish Cancer Society. Additionally, you must submit a status report and information on the latest funded project's publications, whether you are applying for the same project or a different one.



12.4 Tab 4 – Attachments

Up to 6 PDF files with a maximum of 12 pages in total can be attached. Only attach files if necessary for the application assessment. Do not repeat information already stated in the application. Remember to give all files explanatory names.

Images, tables, photos, drawings, scanned letters, and other relevant documents can be attached as PDFs.

12.5 Submit

If the application is ready to be sent, press the Submit button at the bottom of the page, then confirm that you are sure it should be sent.

When the application has been submitted, you will receive an email receipt.



13. The committees' address and secretariat

The Danish Cancer Society
Funding and Follow-up
Strandboulevarden 49
DK-2100 København Ø
Tel: +45 35 25 75 00
Email: forskningsbevilling@cancer.dk



13.1 Funding

See here who to contact if you have questions about the application system, the application process, or an ongoing grant.

KBVU-BK project and Research Talent Award
Funding coordinator [Sofie Mogensen](mailto:sofmog@cancer.dk), sofmog@cancer.dk, tel. +45 35 25 71 37
Funding coordinator [Henriette M. Christensen](mailto:henchr@cancer.dk), henchr@cancer.dk, tel. +45 35 25 72 68 (Will be on maternity leave until 6 January 2026)

KBVU-MS project, Stays abroad less than/exceeding 1 month without salary and scholarships
Funding coordinator [Michelle Malou Speiermann](mailto:mimas@cancer.dk), mimas@cancer.dk, tel. +45 35 25 72 58

Knæk Cancer project and Young Talented Cancer Researchers
Funding coordinator [Anne Mette Bak](mailto:amb@cancer.dk), amb@cancer.dk, tel. +45 35 25 72 57

Knæk Cancer Professorship
Funding coordinator [Louise Elberg Pedersen](mailto:louped@cancer.dk), louped@cancer.dk, tel. +45 35 25 77 57

General questions of fundamental importance
Head of Funding and Follow-up [Christina J. B. Koefoed-Hansen](mailto:ckh@cancer.dk), ckh@cancer.dk, tel. +45 35 25 72 59

13.2 Follow-up

See here who to contact if you have questions regarding research follow-up, research report, status report, research results, or dissemination – either by contacting forskning-sopfolgning@cancer.dk or directly.

Regarding grants to researchers not employed at the Danish Cancer Society
Consultant, Research Follow-up [Lea Helqvist](mailto:leah@cancer.dk), leah@cancer.dk, tel. 35 25 72 67 or
Consultant, Research Follow-up [Henriette S. Gärtner](mailto:hengar@cancer.dk), hengar@cancer.dk, tel. 35 25 72 69 or
Research editor [Marianne Vestergaard](mailto:marves@cancer.dk), marves@cancer.dk, tel. 35 25 72 36

Regarding grants to researchers employed at the Danish Cancer Society
Research editor [Mette Weber](mailto:mvw@cancer.dk), mvw@cancer.dk, tel. 35 25 72 35

